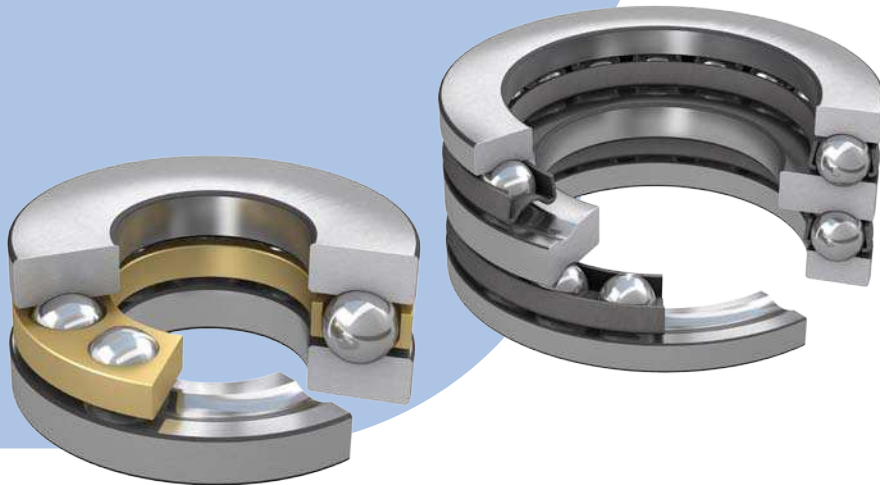


Why SKF?

Thrust ball bearings



Single and double direction thrust ball bearings are used to accommodate pure axial loads, mostly in low-speed applications. Though their design is rather simple, these robust bearings can provide long, trouble-free service life. All SKF thrust ball bearings are produced to the same high quality standards in order to fulfil the requirements of the application.

Thrust ball bearings are separable so that mounting is simple as the shaft and housing washers can be mounted separately. Depending on the bearing series and size, SKF thrust ball bearings are fitted with either pressed steel, machined brass or machined steel cages.

Product features

- Single direction accommodates pure axial load in one direction and double direction in both
- The bearings are separable
- Special designs available on request

User benefits

- **High reliability**
- Simple mounting
- Wide assortment
- World wide availability

Common applications

- Fans
- Blowers
- Rotary compressors
- Rotating tailstocks
- Brake compensation devices

Industries

- Fluid machinery
- Machine tools
- Agriculture and forestry
- Automotive and railway
- Material handling

Single direction thrust ball bearings

SKF single direction thrust ball bearings accommodate axial loads and locate a shaft axially, in one direction only. They consist of a shaft washer, a housing washer and a ball and cage assembly.

Housing washers on smaller sizes are available with either a flat or a sphered seat surface. Bearings with a sphered housing washer can be used together with a sphered seat washer to accommodate initial mis-

alignment between the support surface in the housing and the shaft.

Sphered seat washers are available from SKF but must be ordered separately.

Double direction thrust ball bearings

SKF double direction thrust ball bearings accommodate axial loads and locate a shaft axially, in both directions. They consist of one shaft washer, two housing washers and two ball and cage assemblies. The housing washers and ball and cage assemblies are identical to those used in single direction bearings.

Housing washers on smaller sizes are available with either flat or sphered seat surfaces. Bearings with sphered housing washers can be used together with sphered seat washers to accommodate initial misalignment between the support surface in the housing and the shaft.

Sphered seat washers are available from SKF but must be ordered separately.

Bearing data

	Thrust ball bearings	
	with flat housing washers	with sphered housing washer(s)
Dimension standards	ISO 104 Bearings in the BA series are not standardized.	ISO 20516 (including sphered seat washers)
Tolerances	Normal P5 or P6 on request (single direction bearings only)	Normal
For additional information (→ page 132 <i>Rolling bearings catalogue</i>)	Values: ISO 199 (→ table 10, page 144, <i>Rolling bearings catalogue</i>) Bearings in the BA series are not standardized.	
Misalignment	–	Accommodate initial misalignment between the support surfaces in the housing and on the shaft.
Friction, starting torque, power loss	Frictional moment, starting torque, and power loss can be calculated as specified under <i>Friction</i> (→ page 97, <i>Rolling bearings catalogue</i>), or using the tools available online at skf.com/bearingcalculator .	
Defect frequencies	Defect frequencies can be calculated using the tools available online at skf.com/bearingcalculator .	



Single direction thrust ball bearing



Double direction thrust ball bearing

© SKF is a registered trademark of the SKF Group.

© SKF Group 2014

The contents of this publication are the copyright of the publisher and may not be reproduced (even extracts) unless prior written permission is granted. Every care has been taken to ensure the accuracy of the information contained in this publication but no liability can be accepted for any loss or damage whether direct, indirect or consequential arising out of the use of the information contained herein.

PUB BU/P8 14358 EN · February 2014

